

LocoLoc®

Swaging Tools

Loss Ends®



HC-3410

Battery-Powered Handswaging Tool

Operator's Manual

LOSS & CO. INC.
CABLEWARE® DIVISION

CONTENTS

Title	Page
Specifications	1
Standard Accesories	2
Operating Instructions	3
Dies	7
Part List	9
Troubleshooting Guide	10
Warranty	11

SPECIFICATIONS

Swages aluminum and copper oval sleeves from 1/4 up to 1/2 sizes wire rope.

CRIMPING TOOL

Output:	12 ton
Weight:	19 lbs. with battery
Size:	18"L x 3.5"W x 10.5"H
Jaw Opening:	1"

BATTERY CARTRIDGE (BP-80)

Battery Type:	Lithium Ion
Voltage:	14.4V DC
Rated current:	3 Ah
Charge time:	1 hour
Dimensions:	3.5"L x 2.7"W x 5.3"H
Weight:	1.25 lbs.

BATTERY CHARGER (CH-90)

Input Voltage:	120V AC
Charging Capacity:	20VA
Dimensions:	4.25"L x 3.5"W x 3"H
Weight:	1.5 lbs.

BATTERY POWERED COMPRESSION TOOL

- 12 Ton Output
- Accepts all 12 Ton #3-H Type Dies
- One Hand Operation
- Fully-Enclosed Weather-Resistant Housing
- Rotational Head

STANDARD ACCESSORIES

- 1 Carrying Case
- 1 Battery Charger
- 2 TBP-80 Lithium Ion Batteries
- 1 Carrying Strap



BATTERY CARTRIDGE



BATTERY CHARGER



CARRYING CASE

OPERATING INSTRUCTIONS

CHARGING THE BATTERY

1. Insert the plug end into 120V power source. The LED indicator will be steady green indicating the charger is now in “stand-by” mode and ready to charge the battery. **Do not plug the charger into a generator as this will likely cause the fuse in the charger to short, and will not operate.**
2. To charge a drained battery, insert the battery into the charger until the LED indicator shows a steady amber. This indicates the battery is being charged and will be completed in approximately 50-70 minutes. The LED indicator will show a flashing green (90%) - Steady Green (100%).
3. If the indicator shows a flashing amber LED light when the battery is inserted, the battery is too hot to be charged and must be cooled to room temperature before charging. Do not leave the battery in the charger to cool as the charger will not recognize the battery is inserted and will not charge.
4. If the LED indicator goes out or is flashing quick amber, this could be a possible short in the battery circuit, or a problem with the charger itself. It is best to consult the factory for service if such a condition occurs.



ATTACHING THE BATTERY CARTRIDGE

1. While pressing the latch, pull out the battery cartridge. To replace the battery cartridge, push the new cartridge firmly into place.
2. After inserting a battery cartridge, check that it is securely in place by pulling gently. Do not press the latch when pulling the cartridge.



TRIGGER AND RELEASE BUTTON

1. The ram advances when the trigger is pressed and stops when the trigger is released.
2. To retract the ram, push the release button. The ram continues to retract while the release button is pressed.

IMPORTANT OPERATING PRECAUTIONS

PRECAUTIONS FOR THE TOOL

1. **Always wear protective eye wear when operating the tool.**
2. Select appropriate dies for the connector to be compressed. Incorrect combinations result in inferior connections of the conductors. Consult your connector manufacturer for the recommended die/connector combinations.
3. Never operate tool without dies in place
4. Always point the tool away from other people.
5. If the tool is stored for an extended period at a temperature of less than 25°F (-5°C), the tool should be allowed to return to room temperature to ensure smooth operation. Use the tool only after it has been at room temperature for 1 hour.
6. Do not drop the tool. Dropping the tool may damage the hydraulic circuit and result in the tool not functioning correctly.
7. Keep the head and ram clean and free of debris. Solvents can be used to clean the head, but should not be used on the plastic body. Use soap and water to clean the body.

PRECAUTIONS FOR THE BATTERY CARTRIDGE

1. Do not short circuit the contacts or expose the cartridge to water, oil or solvents.
2. Do not disassemble or attempt to repair the battery cartridge or dispose of in a fire.
3. Do not drop or otherwise abuse the battery cartridge.
4. Do not leave the cartridge in locations where it will be exposed to a temperature greater than 140°F (60°C) for an extended period.
5. The battery has a limited life. When the crimping capacity becomes about 1/2 that of the original capacity, the battery should be replaced.
6. If the battery cartridge is stored without being charged, natural drainage will cause the power to be reduced. The battery should be charged every 3 months if not in use.

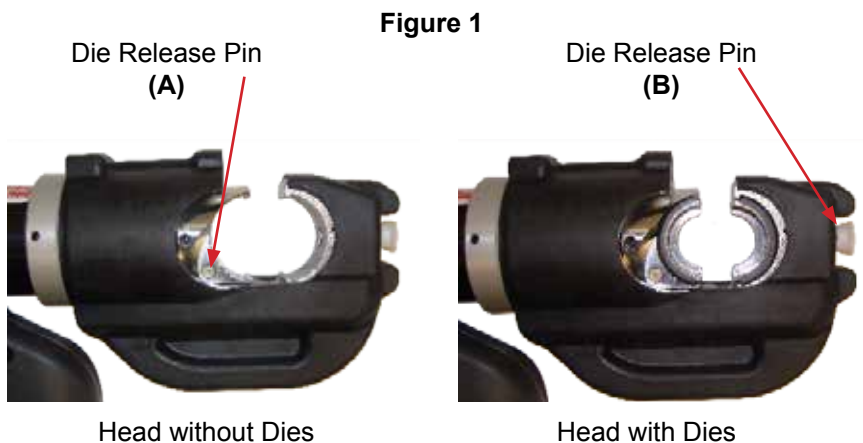
PRECAUTIONS FOR THE CHARGER

1. The LED indicator lights up amber and remains lit when the unit starts charging a battery cartridge.
2. Allow battery cartridges to cool before charging. Allow at least 15 minutes between charges when charging several cartridges in succession.
3. Never short circuit the output terminals.
4. Do not expose the charger to water, oil or solvents.
5. Do not disassemble, attempt to modify, drop or otherwise abuse charger.

OPERATING INSTRUCTIONS

PRECAUTIONS FOR THE TOOL:

1. Select the appropriate size dies for the sleeve being used (see chart on page 7).
2. Insert half of the die into the C-head by sliding it while pulling the die release pin (See Figure 1-B).
3. Press the trigger to advance the ram until the die release pin is accessible. Then insert the other half of the die into the ram while pressing the die release pin (See Figure 1-A).
4. Press trigger and advance the ram so the sleeve is held between the dies.
5. Press the trigger until the compression is completed. A series of clicks will be heard followed by a release in pressure when compression is completed. The LED indicator is red, the compression was not completed. Orange means a completed crimp, but the battery is getting low. Refer to chart on page 8 for number of compressions required.
6. Press the release button to retract the ram. The RAM continues to retract while the release button is pressed. The ram stops when it reaches the lower end.
7. Remove the swage assembly from the tool.



OPERATING INSTRUCTIONS



Properly Swaged Sleeve



Use the gauge that is provided to check the accuracy of the after swage dimension of the sleeve. Properly swaged sleeves should pass easily into the slot that corresponds to the sleeve sizes. Sleeves that do not fit properly into the gauge slot after swaging is an indication that the tool may be out of adjustment or weak battery.

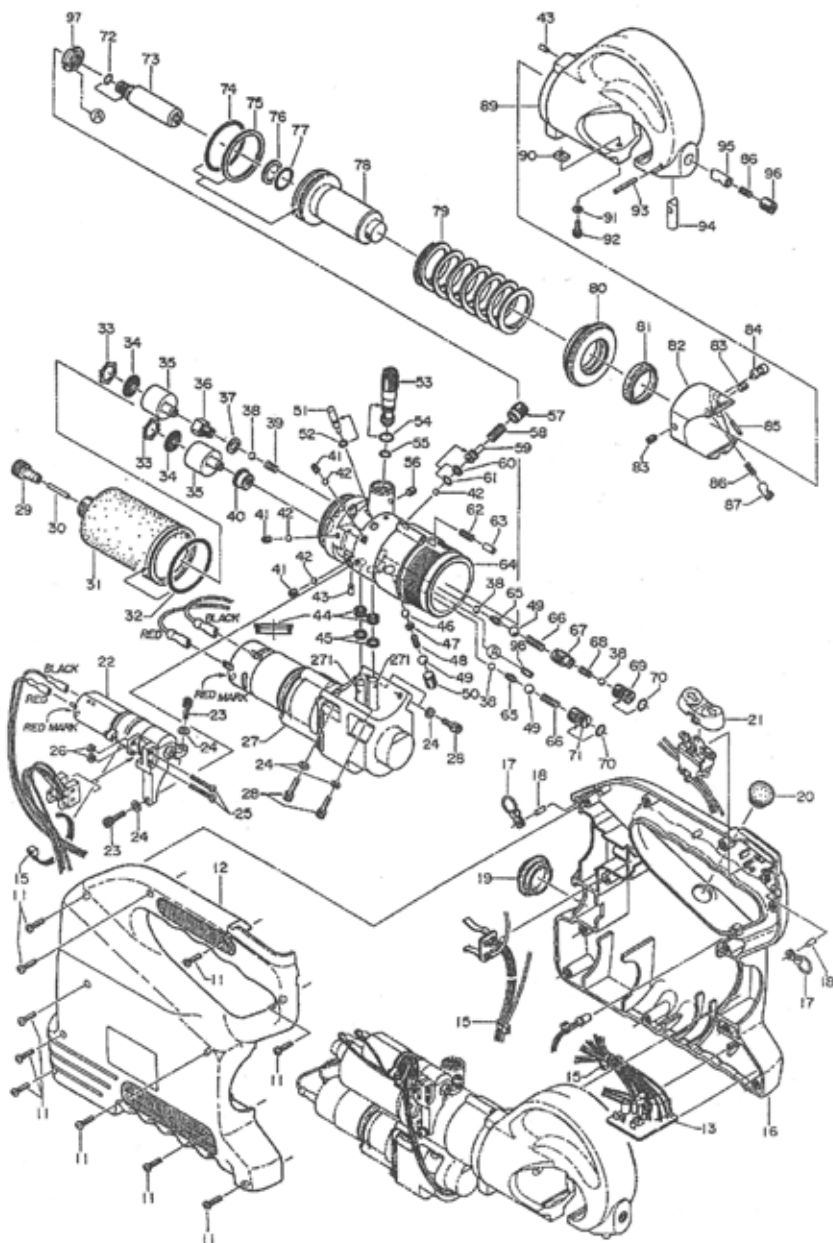
DIES

ALWAYS USE GAUGE TO CHECK THE AFTER SWAGE DIMENSION.
 INFORMATION BELOW FOR: FLEXIBLE CABLE 7X19 / 6X19 CONSTRUCTION.

Cable Diameter	Loos Part No.	Use Die & Gauge #	Sleeve	No. of Compressions
1/4	HD3-8	1/4 A/C	Copper & Aluminum Oval	2
5/16	HD3-10	5/16 A/C 3/8 SS	Copper, Aluminum, & SS Oval	2
3/8	HD3-12	3/8 A/C	Copper & Aluminum Oval	3
7/16	HD3-14C	7/16 C	Copper Oval	4
7/16	HD3-14A/16C	7/16 A	Aluminum Oval	3
1/2	HD3-14A/16C	1/2 C	Copper Oval	4
1/2	HD3-16A	1/2 A	Aluminum Oval	4

FOR MAXIMUM SAFETY AND HOLDING POWER WE RECOMMEND USING TWO (2) SLEEVES ON 3/8" AND LARGER.

PARTS DIAGRAM



PARTS LIST

NO.	DESCRIPTION	CODE	QTY	NO.	DESCRIPTION	CODE	QTY
11	M4 X 15 Screw	R150-01	10	60	P-5 Back-Up Ring (B.C.)	E3-126	1
12	Housing (R)	351-01	1	61	P-5 O-Ring	5N-35	1
13	Control Unit	351-02	1	62	Spring (371)	51-17	1
15	Binder	HR-30	3	63	Stopper Pin	351-16	1
16	Housing (L)	351-03	1	64	Body	351-17	1
17	Hanging Ring Ass'y	101A	2	65	Spring (66)	85-40	2
18	4 X 12 Parallel Pin	351-04	2	66	Spring (67)	85-39	2
19	Oil Feed Cap	351-05	1	67	Valve Screw (2)	351-18	1
20	Cartridge Cap	ROB-103	1	68	Spring (340)	51-27	1
21	Switch Knob	351-06	1	69	Valve Screw (3)	351-19	1
22	Release Unit	351-07	1	70	P-7 O-Ring	16-60	2
23	M4 X 10 Screw	351-08	2	71	Valve Screw (1)	R510A-09	1
24	M4 Flat Washer	16-81	6	72	S-5 O-Ring	351-20	1
25	M2.3 X 25 Screw	ROB-86	2	73	Inner Pipe	341-01	1
26	M2.3 Hex Nut	P500-22	2	74	P-41 O-Ring	L100-23	1
27	Power Unit	351-09	1	75	P-41 Back-Up Ring (B.C.)	16B-04	1
28	M4 X 14 Screw	ROB-128	4	76	P-16 Back-Up Ring (B.C.)	22-24	1
29	Reservoir Cap	410-55	1	77	P-16 O-Ring	22-25	1
30	Magnet	ROB-25	1	78	Ram	341-02A	1
31	Oil Reservoir (37)	351-10	1	79	Spring (596)	341-03	1
32	P-40 O-Ring	700S-27	1	80	Guide Ring	341-04	1
33	SI-20 Ring	410-74	2	81	SER-30 Scraper	R510-03	1
34	Filter Screen	410-73	2	82	Ram Head	341-05A	1
35	Strainer	9H-43A	2	83	M5 X 8 Screw (C.P.)	P55A-02	2
36	Strainer Bushing (1)	351-11	1	84	Die Release Pin	430-21	1
37	Copper Gasket (20)	100W-17	1	85	2.5 X 14 Drive Pin (BW)	410-11	1
38	3/16" Ball	16-49	4	86	Spring (177)	410-01	2
39	Spring (340)	51-27	1	87	Retainer Pin (B)	410-12	1
40	Strainer Bushing (2)	ROB-82	1	89	Head	341-07	1
41	M5 X 5 Screw (F.P.)	510A-05	3	90	Key	410-08	1
42	5/32" Ball	22-21	4	91	M4 Lock Washer	410-07	1
43	3 X 8 Dowel Pin (D)	610F-11	2	92	M4 X 10 Screw	410-06	1
44	PS-8 Pent Seal	16-44	2	93	2.5 X 25 Drive Pin (BW)	410-04	1
45	P-8 Back-Up Ring (B.C.)	85-33	2	94	Die Release Pin (A)	410-03	1
46	7/32" Ball	16-26	1	95	Retainer Pin (A)	410-02	1
47	M3 Flat Washer	16-38	1	96	M10 X 10 Screw (F.P.)	16-41	1
48	Spring (76)	16-39	1	271	Pump Piston (2)	P500-10	2
49	9/32" Ball	16-40	3				
50	M10 X 12 Screw (F.P.)	40-47	1				
51	Release Pin	351-12	1				
52	P-3 O-Ring	16-36	1				
53	Valve Cartridge	R510-18A	1				
54	S-9 O-Ring	410-71	1				
55	P-8 O-Ring (B)	700S-15	1				
56	M5 X 5 Screw	300-73	1				
57	Valve Screw (4)	351-13	1				
58	Spring (595)	351-14	1				
59	Reduction Valve	351-15	1				

TROUBLESHOOTING GUIDE

PROBLEM	CAUSE	SOLUTION
MOTOR RUNS, BUT THE TOOL JAWS WILL NOT ADVANCE	Insufficient Hydraulic Oil	Consult Factory for Repair Service
	Air Block in Hydraulic System	Invert tool to allow air to rise towards the top of the oil bladder
	Defective Hydraulic Circuit	Consult Factory for Repair Service
MOTOR RUNS, TOOL JAWS ADVANCE BUT WILL NOT BUILD PRESSURE	Insufficient Hydraulic Oil	Consult Factory for Repair Service
	Defective Suction Valve or Bypass Cartridge	Consult Factory for Repair Service
MOTOR WILL NOT RUN AT ALL	Defective Battery	Charge or Replace Battery
	Bad Contact or Loose Battery Connections	Check all Connections
	Misaligned Switch	Check to Make Sure that Switch is Properly Aligned with Trigger
		Consult Factory for Repair Service
TOOL JAWS WILL NOT RELEASE	Tool Did Not Complete a Full Cycle and Bypass	Press Trigger and allow Tool to Bypass. Then Release Tool Jaws.
	Connector is Jammed in Tool Jaws	Press and Hold Release Trigger While Prying Tool Jaws Apart.
	Release Trigger is Bent or Misaligned	Consult Factory for Repair Service

WARRANTY

Huskie Tools products carry a warranty that makes us a leader in the tool industry. No other manufacturer dares to back its tools as we do.

All Huskie REC-SERIES battery-operated products carry a 5-year warranty. The ECO-SERIES battery-operated products carry a 1-year warranty. The IL-ND battery-operated products carry a 3-year warranty. The BP-70E, BP-70EI, BP-70MH, and BP-80 batteries carry a 5-year or 1,000 recharge cycles warranty from the date stamped on the battery.

PRODUCT WARRANTY

REC-Series battery-operated products	5 Years
ECO-Series battery-operated products*	1 Year
IL-ND battery-operated products	3 Years
Batteries (BP-70E, BP-70EI**, BP-70MH, BP-80)	5 Years
Chargers (CH-35R, CH-70DCH, CH-90, CH-86)	5 Years

*Please call the factory with warranty questions.

**The BP-70EI is no longer available. The LED indicator on the BP-70EI carries a 1-year warranty from purchase date.

The warranty does not cover any damages incurred from a Huskie tool including damages to property, bodily injuries, and lost wages resulting from such injuries. This warranty solely covers the repair or replacement of tools supplied by Huskie. These remedies are exclusive, and the total liability of Huskie Tools, Inc. whether based on contract, warranty, negligence, indemnification, strict liability or otherwise, shall not exceed the purchase price of the tool. In no event shall Huskie Tools, Inc. be liable for consequential, incidental or special damages.

HUSKIE TOOLS, INC. MAKES NO OTHER WARRANTIES OF ANY KIND, EXPRESSED OR IMPLIED, AND ALL IMPLIED WARRANTIES INCLUDING ANY WARRANTY OF MERCHANTABILITY AND FITNESS FOR A PARTICULAR PURPOSE ARE DISCLAIMED.

WARRANTY (CONT.)

Huskie reserves the right to determine all warranty claims. Huskie will not warranty tools containing parts or batteries not originally supplied by Huskie. Failure due to misuse, improper maintenance, misapplication, not following instructions or warnings, abuse or repairs attempted by anyone other than Huskie Tools, Inc. or an authorized service center renders this warranty null and void.

Repair and Warranty Claims

All claims must be sent to Huskie for inspection and authorization. A Return Goods Authorization (RGA) is required before shipping tools to Huskie. Secure the authorization by telephoning or writing to Huskie's main office with details of the claim. Non-warranty repairs are handled using the same procedure. Repairs exceeding 50 percent of the cost of a new tool will be advised before repairs are made.

Payment Terms

Upon credit approval, Huskie's standard payment terms are net-30 days. Visa, Mastercard, Discover, and American Express are also accepted.

Freight

All Huskie Tools are FOB, Glendale Heights, Illinois. Goods will be shipped pre-paid and added, unless otherwise specified. Freight shipments over \$17,000 are pre-paid.

Quotations

Special quantity quotations should be phoned in to discuss the scope of your tool requests.

WARRANTY (CONT.)

Complete Support Services

Our customers have direct access to us for training, service, and problem solving. As specialists in tools, we maintain a trained repair staff and a large stock of parts. This contrasts with many tool suppliers who carry tools as a sideline without offering support services. Here are some reasons why our customers love to do business with us:

- Quick delivery
- We maintain inventory in our headquarters
- Training and troubleshooting services
- Fast repair service
- Design and engineering service for special tools

HOW TO GET SERVICE UNDER THE TERMS OF THE LIMITED WARRANTY

Return your product directly to Huskie Tools, Inc. as our representative network is not prepared to service the product under the terms of this warranty.

1. Write, call, or fax Huskie stating the tool's purchase date and problem. You will be given an RGA # to assure that your merchandise will be properly handled upon its receipt.
2. CAUTION: Make sure the product is packaged adequately so as to prevent damage or loss during transit. The shipment must be prepaid and we recommend that it be insured. A cover letter indicating the reason for the return should be included in order to facilitate repairs.
3. To fill out an RGA online, go to HuskieTools.com and click on "Repairs."



198 N. Brandon Drive, Glendale Heights, IL 60139

Phone: (800) 860-6170 Fax: (800) 345-3767

HuskieTools.com



901 Industrial Blvd • Naples, FL 34104
Tel: (239) 643-LOOS • Fax (239) 643-4558
E-mail: info@loosnaples.com • Website: www.loosnaples.com